

**3 YEAR WARRANTY**

**SUPER TINY Side View Series**

The Super Tiny Strip Side View Series offers great solution for small tight fit area, Designed for lighting professionals, architectural lighting, sign letter lighting, perimeter lighting amongst many other applications.

- High Quality LED Light Source (3528 SMD Technology Ultra Bright Grade)
- Protected Jacket for indoor or outdoor enclosed dry locations
- Flexible compact strip with 3M VHB self-adhesive backing
- Cuttable Segment of 3 LEDs
- 50,000 hours lifespan
- UL 879, SAM recognized class 2 U.S. and Canada certified
- 120° Viewing Angle

**Applications**

- Channel Letters
- Cabinet and Light Boxes
- Cove Lightings
- Edge Lit lightings
- Decorate lightings



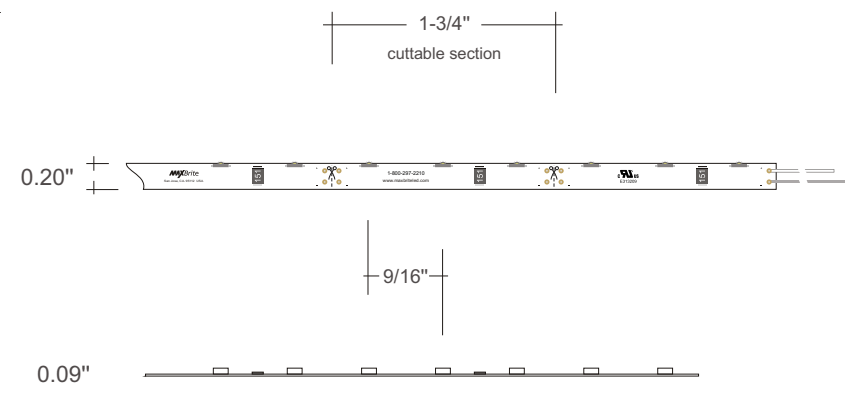
**Flexible Ribbon Strip 16ft Reel Architectural Lighting**

**OPTICAL CHARACTERISTICS**

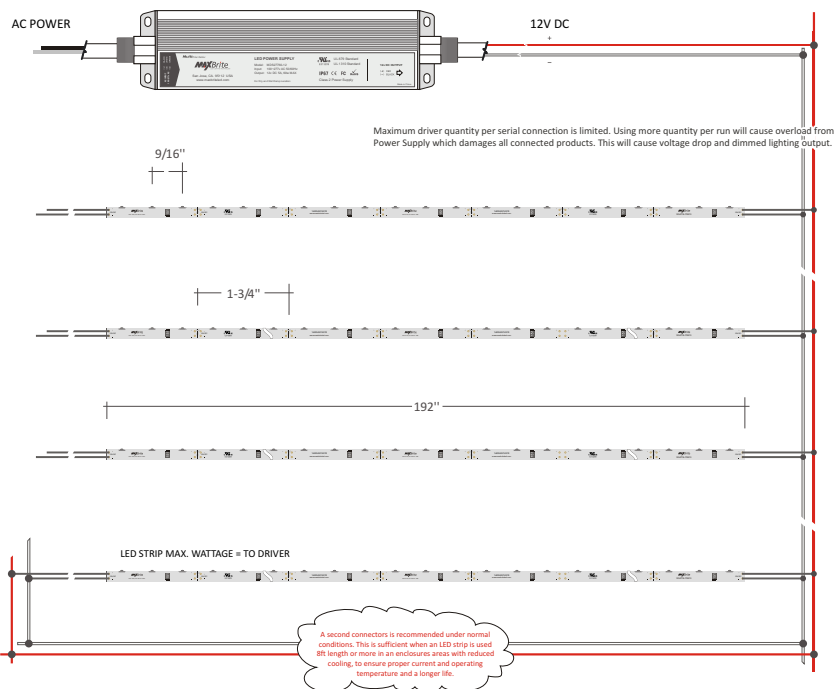
Available Color	Luminous Flux (lm/ft., lm/reel)		CCT (Kelvin) & Dominant Wave Length	Consumption (lm/ft., lm/reel)		Input Voltage
	per ft	per reel		per ft	per reel	
Warm White	98lm	1562lm	3000k	1.68w	26.88w	12v DC
Warm White	101lm	1613lm	4500k	1.68w	26.88w	12v DC
Natural White	105lm	1680lm	5000k	1.68w	26.88w	12v DC
Cool White	116lm	1840lm	6000k	1.68w	26.88w	12v DC
Pure White	104lm	1663lm	7000k	1.68w	26.88w	12v DC
Brite Red	71lm	1442lm	620-630nm	1.68w	26.88w	12v DC
Vivid Blue	64lm	1025lm	450-465nm	1.68w	26.88w	12v DC
Mega Green	122lm	1949lm	515-530nm	1.68w	26.88w	12v DC
Golden Yellow	57lm	907lm	580-596nm	1.68w	26.88w	12v DC

\*CRI (Color Rendering Index) for white product types is 70 / \*Luminous Flux measuring equipment is CAS140B  
 \*Viewing angle is the off axis angle from lamp centerline where the luminous intensity is half of the peak value / \*CCT 5% tester tolerance  
 \*Dominant wavelength is derived from the CIE 1931 Chromaticity diagram and represents the perceived color  
 \*Color temperature for white is strictly controlled by bin rank system and it consists of three ranks which should not be used simultaneously.

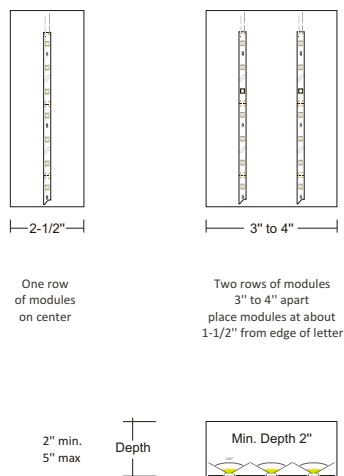
**MECHANICAL**



## WIRING DIAGRAM



## Recommended Layout Density per Channel Width



Use recommended length for pitch between each module to achieve optimum lighting output while maintaining lowest unit cost. Failure or misplacing will cause dimmed spots or uneven appearance of light on the surface. 2" minimum depth.

## CAUTIONS

- USE 12V DC CONSTANT VOLTAGE INPUT ONLY
- DO NOT USE AC INPUT !
- Do not cut or rejoin wires while product is connected with live power source.
- DO NOT PERFORM ACTION LISTED BELOW
  - ◆ Alter or modify Strips
  - ◆ Touch LED lamps with sharp objects
  - ◆ Put glue or silicone over the LED lamps
- Avoid performing installation under rain or high humidity and only install in temperatures above 50°F (10°) to allow for better mounting tape adhesion
- Maximum driver quantity per serial connection is limited to available power supply wattage, failure causes overload of current and damages to the product

## POWER SUPPLY LOADING

Output (W)	20W	30W	40W	45W	60W
Max. Quantity Strip Footage*	10	15	20	23	30
Max. Length Recommended	15 ft	30 ft	50 ft	75 ft	100 ft
Extension Wire	18AWG	18AWG	16AWG	14AWG	12AWG

\* Maximum quantity for MAXBRITE Strip is based on approximately 85% of specified capacity of power supplies for extended lifespan. Equip with protective box for outdoor use and the box should have ventilating holes.

## PREPARATION

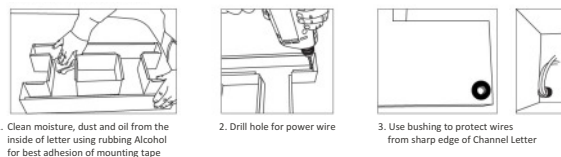
### Tools Required



### Supplies Required



### Prepare Channel Letters



Use only white paint inside channels for better reflection