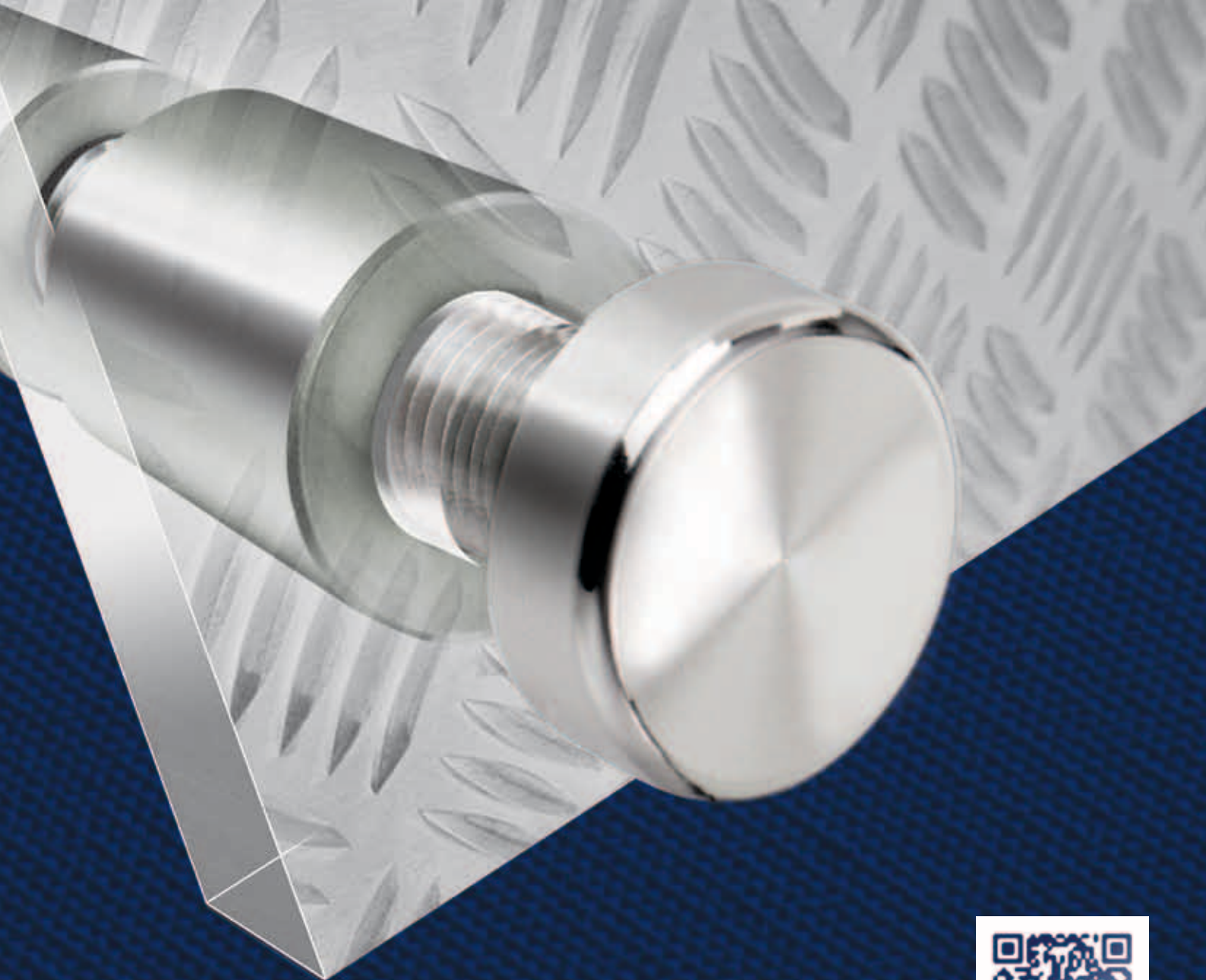




mono●mount™

standoff system

best for panel mounting



www.pizazzsystems.com

<p>Hybrid Range</p>	<p>Available in small, medium, large and XL sizes with the E part options below:</p>																																		
 <p>D parts are available in small, medium and large sizes</p>	<p>Aluminium Natural</p> 	<p>Brass Satin Chrome</p> 	<p>Brass Bright Chrome</p> 	<p>Brass Satin Black</p> 	<p>Brass Satin Gold</p> 	<p>Brass Bright Gold</p> 																													
<p>This range has clear gloss resin A parts. Also available with large A parts and XL E parts.</p>																																			
<p>Resin Range</p>	<p>Standard Colours - available in small, medium and large sizes in a matt or gloss finish.</p>																																		
 <p>D parts are available in all sizes and colours</p>	<p>White</p> 	<p>Silver</p> 	<p>Clear</p> 	<p>Nickel</p> 	<p>Black</p> 																														
<p>*Resin Range</p>	<p>PT Colours - available in small, medium and large sizes in a matt or gloss finish.</p>																																		
 <p>D parts are available in all sizes and colours</p>	<p>Blue</p> 	<p>Red</p> 	<p>Yellow</p> 	<p>Green</p> 	<p>Grey</p> 																														
<p>Brass Range</p>	<p>Available in small, medium, large, XL and XXL sizes in the following finishes and colours:</p>																																		
 <p>D parts are available in all sizes and colours</p>	<p>Satin Chrome</p> 	<p>Bright Chrome</p> 	<p>Satin Black</p> 	<p>Satin Gold</p> 	<p>Bright Gold</p> 																														
<p>Aluminium Range</p>	<p>Available in the following sizes in a natural finish.</p>																																		
 <p>D parts are available in all sizes</p>	 <p>Nominal Dimensions</p> <table border="1"> <thead> <tr> <th>Size</th> <th>Width (mm)</th> <th>Width (in)</th> <th>Height (mm)</th> <th>Height (in)</th> </tr> </thead> <tbody> <tr> <td>Small</td> <td>12.50</td> <td>.49</td> <td>15</td> <td>.59</td> </tr> <tr> <td>Medium</td> <td>15.68</td> <td>.62</td> <td>20</td> <td>.79</td> </tr> <tr> <td>Large</td> <td>18.85</td> <td>.74</td> <td>25</td> <td>.98</td> </tr> <tr> <td>XL</td> <td>25.20</td> <td>.99</td> <td>30</td> <td>1.18</td> </tr> <tr> <td>XXL</td> <td>31.55</td> <td>1.24</td> <td>35</td> <td>1.38</td> </tr> </tbody> </table>					Size	Width (mm)	Width (in)	Height (mm)	Height (in)	Small	12.50	.49	15	.59	Medium	15.68	.62	20	.79	Large	18.85	.74	25	.98	XL	25.20	.99	30	1.18	XXL	31.55	1.24	35	1.38
Size	Width (mm)	Width (in)	Height (mm)	Height (in)																															
Small	12.50	.49	15	.59																															
Medium	15.68	.62	20	.79																															
Large	18.85	.74	25	.98																															
XL	25.20	.99	30	1.18																															
XXL	31.55	1.24	35	1.38																															

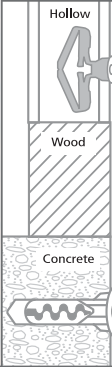


mono•mount™

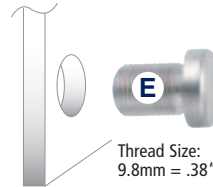
standoff system

mono•mounts™
provide advanced
functionality
giving you more
creative options.

Standard Parts A + E



The internal back wall of **A parts** is designed to accommodate the head of an 8 or 9 gauge countersunk screw or bolt.



Thread Size:
9.8mm = .38"

Important:
Use approved wall anchors when required.

For part sizes, panel thickness and weight capacities, visit www.pizazzsystems.com

Optional Extra Parts D

D parts screw between A + E parts.

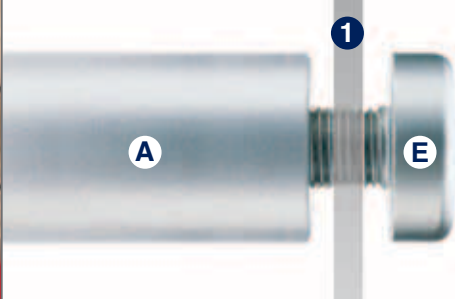


Thread Size:
9.8mm = .38"

D parts are used to hold more panels and/or increase the standoff distance...

Single Panels

are secured between A + E parts.

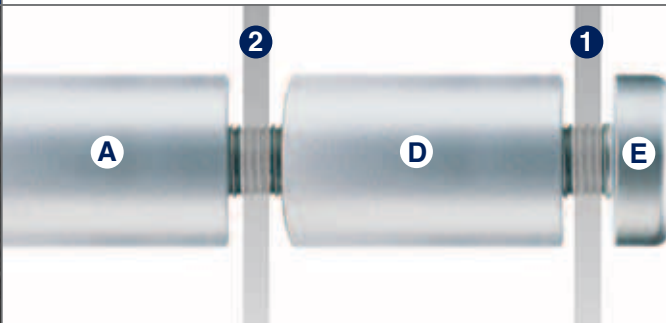


1 Single panel

Monomounts hold panels between their A + E parts.

Multiple Panels

are secured between A + D parts and D + E parts.



1 Front panel

2 Extra panel

Using D parts gives you more creative options including:

- having multiple layers of panels with different colours and textures
- offsetting some layers
- other dramatic effects

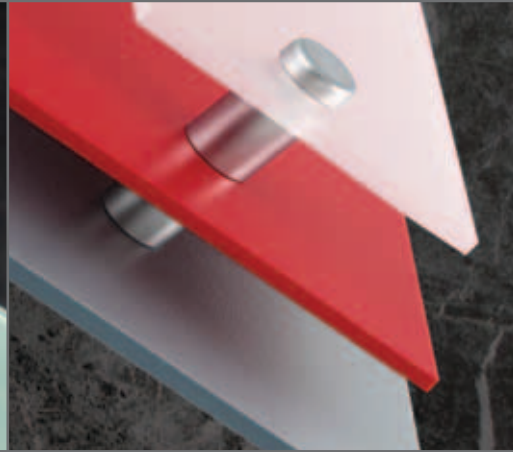
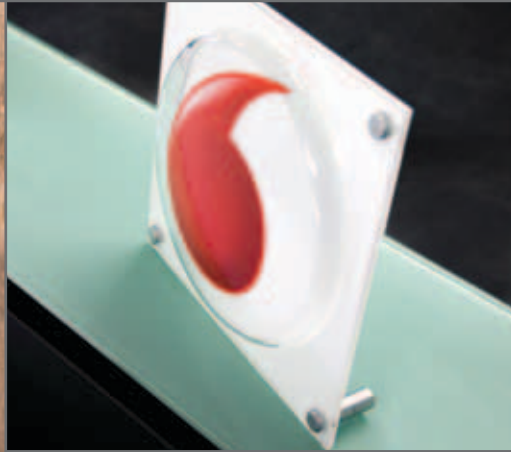
D parts can also be used to increase the standoff distance.



Pizazz
mono•mounts
are distributed by:



Application examples overleaf. ▶

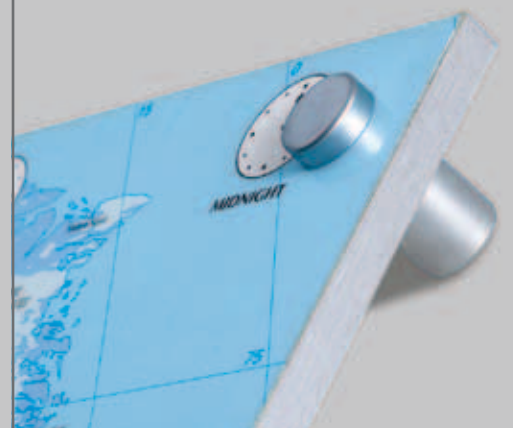


best for panel mounting



mono•mounts give you more creative panel mounting options

www.pizazzsystems.com



JUST *desserts*

